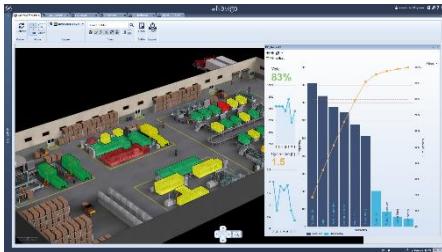


ReBorn enhanced MES suite raises interest of high-tech manufacturer



**Co-FACTOR Coordinator
contact:**

Steinbeis-Europa-Zentrum
Dr. Patricia Wolny
Get in touch via

<http://www.cofactor-eu-project.org>



This project has received funding from the European Union's Horizon 2020 research and innovation programme under grant agreement No 637178



Critical Manufacturing S.A.

Augusto Vilarinho, Business development Director at
Critical Manufacturing:

„Successful Cooperation between Business and R&D activities “

Critical Manufacturing is a Portuguese company with subsidiaries in Germany, China, USA and Taiwan dedicated to empowering manufacturers of complex, high tech discrete products with a manufacturing execution and intelligence system to achieve their goals. With its strong orientation on advanced manufacturing technology and a roadmap fully committed with global Industry 4.0 strategy, CMF is a valuable “digital enabler” partner in the several Factories-of-the-Future projects clustered within Co-FACTOR. As part of the Co-FACTOR B2B efforts a location and meeting room were facilitated for Critical Manufacturing (CMF) to meet with a potential customer from the high-tech electronics manufacturing sector. The customer was particularly interested in an existing CMF product (intelligent [shop floor-MES](#) connectivity and decision making support features) and its specific functionalities that were integrated based on the outcomes of the [ReBorn](#) project. The meeting resulted in a mutual agreement on following-up the contact to explore a possible collaboration for the deployment of the system at the customer’s site.

The discussion also triggered appreciation and interest in the ReBorn approach and concept and was followed by a visit to the ReBorn booth at the AUTOMATICA 2016 industrial trade fair. A real-time demo of the exhibited machines and systems was presented.

For more information about CMF, please visit the company Website:

<http://www.criticalmanufacturing.com/en/homepage>